

# Long Distance Calls

## HOW TO PLACE LONG DISTANCE CALLS

DIRECTORY ASSISTANCE  
FOR LOCAL & LONG  
DISTANCE . . . . . DIAL 1 + 411

When the Directory Assistance Operator answers, give her the city or town, then the name and address you wish to call. Jot down the number for future reference.

Effective May 25, 1984, the FCC approved charging for Directory Assistance.

### MAKING YOUR CALL: STATION-TO-STATION

To use carrier picked to phone being used Dial 1 + Area Code + phone number or to choose another carrier 101 + Carriers Four Digit Access Code + 1 Area Code + phone number.

**Line Verification** - Operator can verify if a line is busy. Operator service charges apply.

**Line Interruption** - Operator can interrupt a conversation. Operator service charges apply.

YOU ARE RESPONSIBLE for calls direct dialed from your phone or accepted collect by anyone at your number. However, toll restriction is available in most areas and arrangements can be made to stop most third number and collect calls by contacting the Business Office.

### LOWEST RATES - DIRECT DIAL

Direct dial calls are completed without operator assistance. The initial charge is based on rates in effect at the time of connection at the calling point.

### OPERATOR ASSISTED CALLS COST MORE

Long distance calls requiring an operator are more expensive. Calls placed from hotels and pay telephones, person-to-person, or third number calls are all operator assisted. The initial period is charged at direct dial rates plus an Operator Assistance Service Charge.

## CALLS TO TELEPHONES WITH AUTOMATIC ANSWERING SETS, FAX MACHINES, MODEMS

Long distance charges apply when dialing 1 +. Charging begins when the called telephone is answered in person or by an automatic answering set, fax machine, modem, etc.

## CALLS TO CELLULAR PHONES

Long distance charges will apply when dialing 1 +.

## CALLS TO MOBILE PHONES

Long distance charges apply for use of the line to get the tone signal for dialing additional numbers whether the mobile phone is actually answered or not.

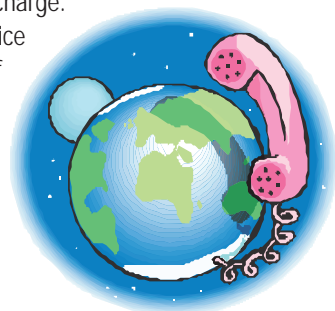
## PTCI LONG DISTANCE TRAVEL CARD

Call the Business Office at 1-800-327-7525 to apply for a Travel Card today. The PTCI Travel Card is your local calling card which is available free on request. It can be used across town on a payphone, in hospitals or on vacation. Use your PTCI Travel Card, you don't need change, and calls will be billed to your number. Calling card calls cost less than other Operator Assisted calls.

### PROTECT YOUR TRAVEL CARD

Be careful not to lose your Travel Card or divulge your billing number. We suggest that you commit the billing number to memory or write it down in a safe place to carry or give to other members of the family. Be certain to check your long distance bill and alert your billing company promptly if there is any unknown charge.

Contact their office immediately if the card is lost or stolen.



# Long Distance Calls

**Call Home cards** are also available and allow a caller to call only the number on the PTCI Travel Card. Your family members can easily keep in touch and if the card is lost or stolen, the only number that can be called is yours. It's similar to collect calling, but more convenient and less expensive.

**Extended Area Service Calls**  
**NO CHARGE TO CALL - if you dial only 7 digit phone number. Charges will be billed on monthly statement if you dial 1 + or use an operator**

Between Adams and Tyrone . . . . . Dial Only 7 Digits  
Between Balko & Bryans Corner . . . Dial Only 7 Digits  
Between Felt-Wheelless & Kenton . . . Dial Only 7 Digits  
Between Floris & Forgan . . . . . Dial Only 7 Digits  
Between Turpin & Liberal . . . . . Dial Only 7 Digits  
Between Guymon & Goodwell . . . . Dial Only 7 Digits  
Between Perryton & Booker . . . . . Dial Only 7 Digits

## ALTERNATE OPERATOR SERVICES (AOS)

Alternate Operator Services have created a tremendous amount of confusion for the calling public. These companies contract with hospitals, motels, hotels, airports, universities or pay telephones. Their charges are not regulated by state and federal commissions, and since they contract to pay a portion of the charge to the business where the phones are located, the call could cost much more than the rate of a normal call. Often the person making the call is not aware that an Alternate Operator Service is being used to make a collect, calling card, third number or person-to-person call.



**BEFORE PLACING THIS TYPE CALL** when you are away from home -

- Ask the operator
- What company are you with?
  - What rate will I be charged?
  - How will I be billed?
  - How can I reach my preferred long distance company operator?

You might also

- Dial your carrier access code.
- Dial 0 and ask to be connected to your choice of operator.
- Go to another phone.

If the AOS connects you with your choice of operator you may be billed for a call from the location of that operator system to your destination- NOT necessarily from where the call was placed.

## **NOTICE:**

"When an 800, 888 or 900 number is dialed from your telephone, your telephone number may be transmitted to the company you have called and may be available to that company's service representative before your call is answered."

In most locations customers can restrict calls made from their phones to numbers that begin with 900.

## **CUSTOMER NOTICE - PER CALL BLOCKING/UNBLOCKING**

With the introduction of CLASS services in some telephone networks, your telephone number may be displayed to the called party. If you have touch-tone service, you may block the passage of your number by dialing \*67 before you place your call. If you have a pulse dial phone, you may dial 1167 to block the passage of your number.

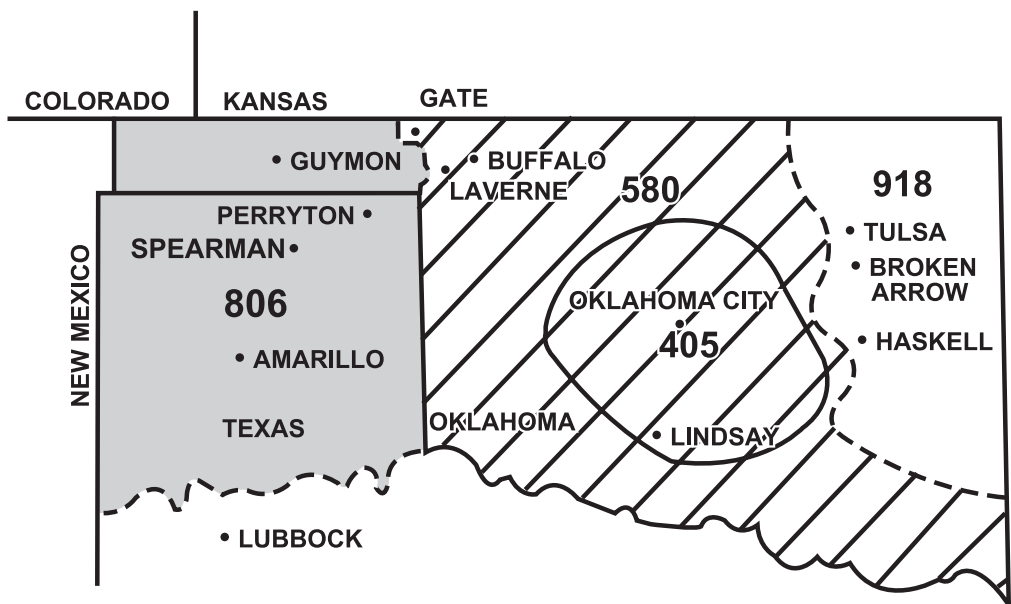
If you subscribe to per line blocking, you may unblock the passage of your number to the called party. If you have touch-tone service, your number will be unblocked by dialing \*82 before you place your call. If you have a pulse dial phone, you may dial 1182 to unblock your number.

Per-Line or Per-Call Blocking does not prevent transmission of your telephone number when you call a company using an 800, 888 or 900 number. Therefore, your number may be available to that company's service representative before your call is answered.

# Long Distance Calls

## Local Access Transport Area (LATA)

Below is a map of the State of Oklahoma and the Texas Panhandle. The gray shaded area is the Local Access Transport Area or LATA in which your local Telephone Company is located. (For all exchanges except Laverne & Gate.) Laverne & Gate are in Oklahoma City LATA. (The striped area.)



## PTCI Cellular Local Calling Areas

Adams & Tyrone.....	580-523
Balko & Bryans Corner.....	580-525
Beaver.....	580-527
Boise City.....	580-517
Eva.....	580-520
Felt & Kenton.....	580-516
Floris & Forgan.....	580-528
Gate.....	580-553
Goodwell & Guymon.....	580-651-617
Griggs.....	580-519
Hardesty.....	580-524
Hooker.....	580-522
Keyes.....	580-518
Logan.....	580-552
Texhoma.....	580-521
Turpin.....	580-539