

# NETSCAPE OUTGOING AUTHENTICATION

1. Open Netscape Messenger
2. Click on Edit then on Preferences...(see figure 1.1 below)

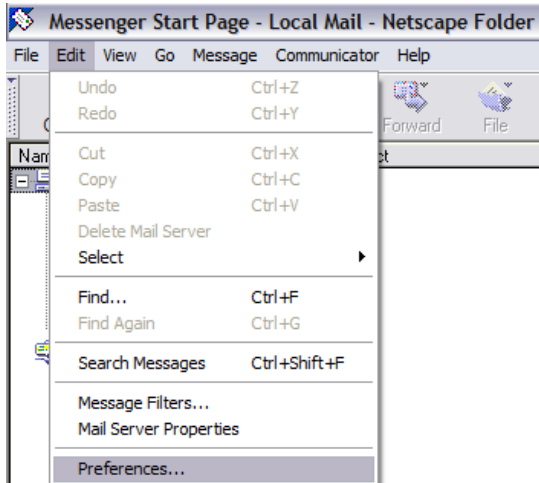


Figure 1.1

3. Expand Mail & Newsgroups by clicking on the + sign to make it – if it is not already. Single click on Mail Servers. (figure 1.2)

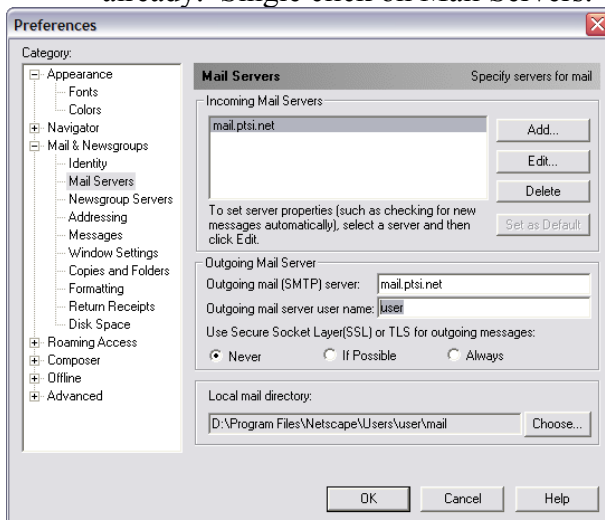


Figure 1.2

4. Under Outgoing mail server user name put in your username (ex. [JohnDoe@ptsi.net](mailto:JohnDoe@ptsi.net) would put in JohnDoe).
5. Click OK until you are back to the main Netscape window.
6. Enter your password if prompted when sending your next message.